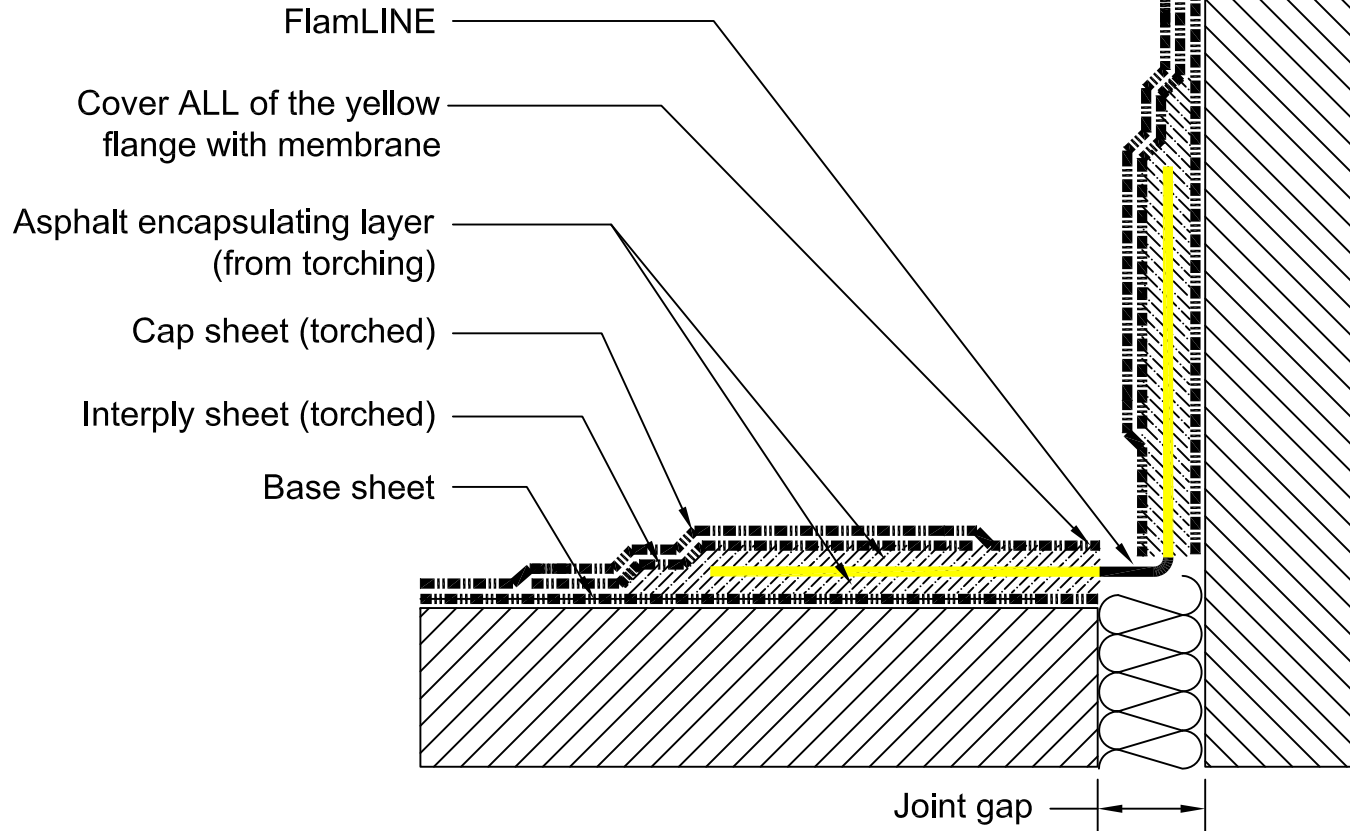


Notes

1. Material is FlamLINE.
2. This detail illustrates a typical application.
Refer to project specific details for more information.

PLAN / SECTION



As a supplier of finished products only, SITURA INC., does not assume responsibility for errors in design, engineering or dimensions. The architect or owner's representative must verify all dimensions and suitability of details. RedLINE®, FlamLINE®, AqualINE® are registered trade marks of SITURA INC. © Copyright SITURA 2017.

DETAIL NAME:

**FlamLINE® Waterproof Expansion Joint
installed into Torched Modified Bitumen
Membrane (Deck-to-Wall)**

DETAIL NUMBER:

FL-TMB-02

SCALE:

NTS

CHECKED BY:

KMZ

DATE:

06/01/07

SHEET:

1 of 1

APPROVALS AND SIGN OFFS

DESCRIPTION	DATE	SIGNED BY:
REVISION #1	01/01/17	SL
REVISION #2		
REVISION #3		
REVISION #4		
REVISION #5		