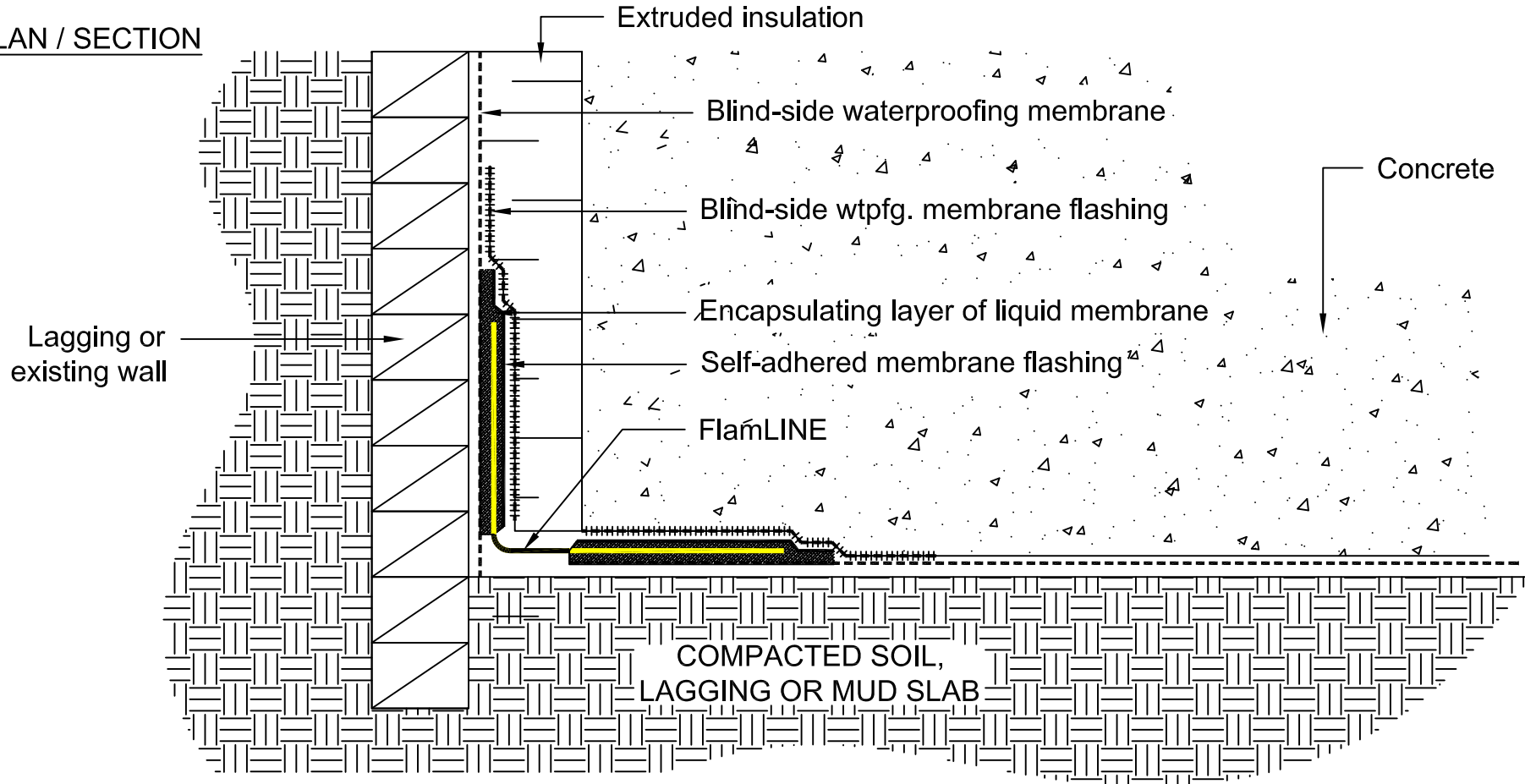


Notes

1. Material is FlamLINE.
2. This detail illustrates a typical application.
Refer to project specific details for more information.
3. Use liquid membrane supplied/recommended by blind-side membrane manufacturer.

PLAN / SECTION



As a supplier of finished products only, SITURA INC., does not assume responsibility for errors in design, engineering or dimensions. The architect or owner's representative must verify all dimensions and suitability of details. RedLINE®, FlamLINE®, AquaLINE® are registered trade marks of SITURA INC. © Copyright SITURA 2017.

DETAIL NAME:

FlamLINE® Waterproof Expansion Joint installed into Blind-Side Waterproofing Membrane (Deck-to-Wall / Wall-to-Wall)

DETAIL NUMBER:

FL-BSW-02

SCALE:

NTS

CHECKED BY:

SL

DATE:

01/01/17

SHEET:

1 of 1

APPROVALS AND SIGN OFFS

DESCRIPTION	DATE	SIGNED BY:
REVISION #1		
REVISION #2		
REVISION #3		
REVISION #4		
REVISION #5		