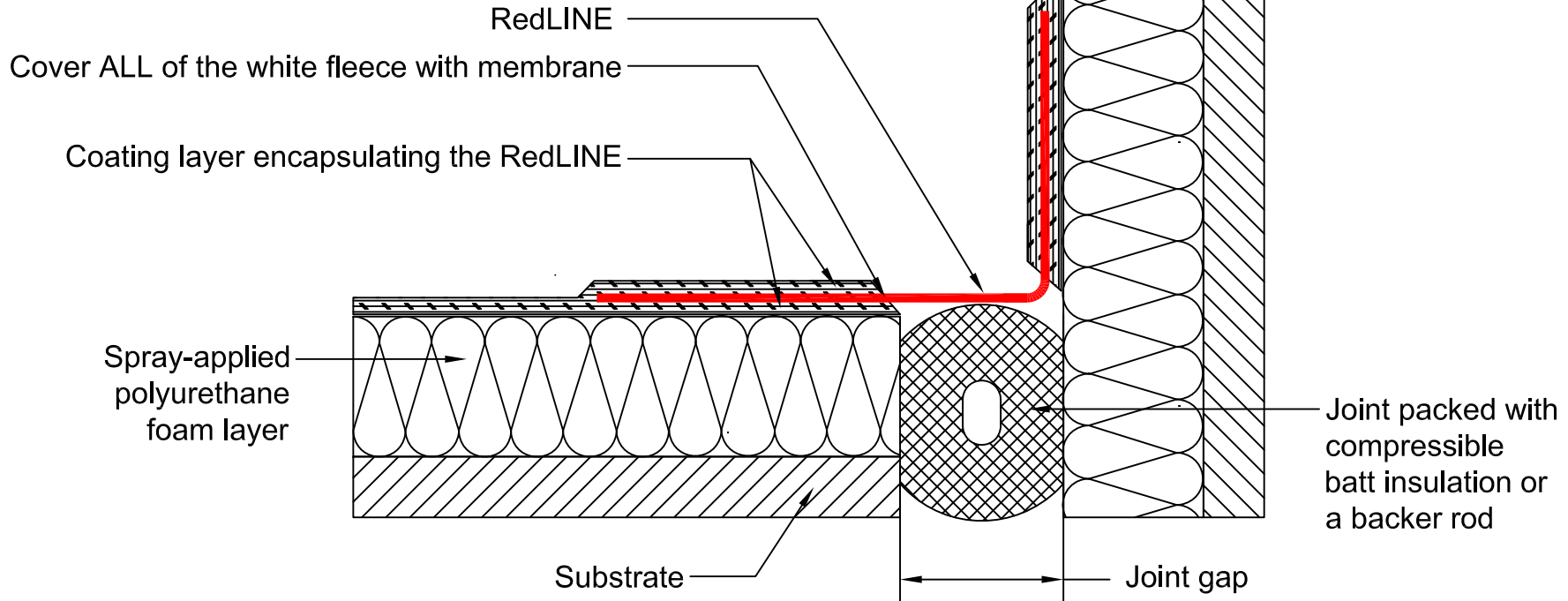


Notes

1. Material is RedLINE.
2. This detail illustrates a typical application.
Refer to project specific details for more information.
3. Use a metal masking tape to cover the RedLINE gland during spraying operations. Remove tape before spray foam has set.

PLAN / SECTION



DETAIL NAME:
**RedLINE® Waterproof Expansion Joint installed
 into Spray-Applied Polyurethane Foam
 (Deck-to-Wall / Wall-to-Wall)**

APPROVALS AND SIGN OFFS

DESCRIPTION	DATE	SIGNED BY:
REVISION #1	01/01/17	SL
REVISION #2		
REVISION #3		
REVISION #4		
REVISION #5		

As a supplier of finished products only, SITURA INC., does not assume responsibility for errors in design, engineering or dimensions. The architect or owner's representative must verify all dimensions and suitability of details. RedLINE®, FlamLINE®, AqualINE® are registered trade marks of SITURA INC. © Copyright SITURA 2017.

DETAIL NUMBER: **RL-SPF-02**

SCALE: **NTS** CHECKED BY: **KMZ** DATE: **06/01/07** SHEET: **1 of 1**