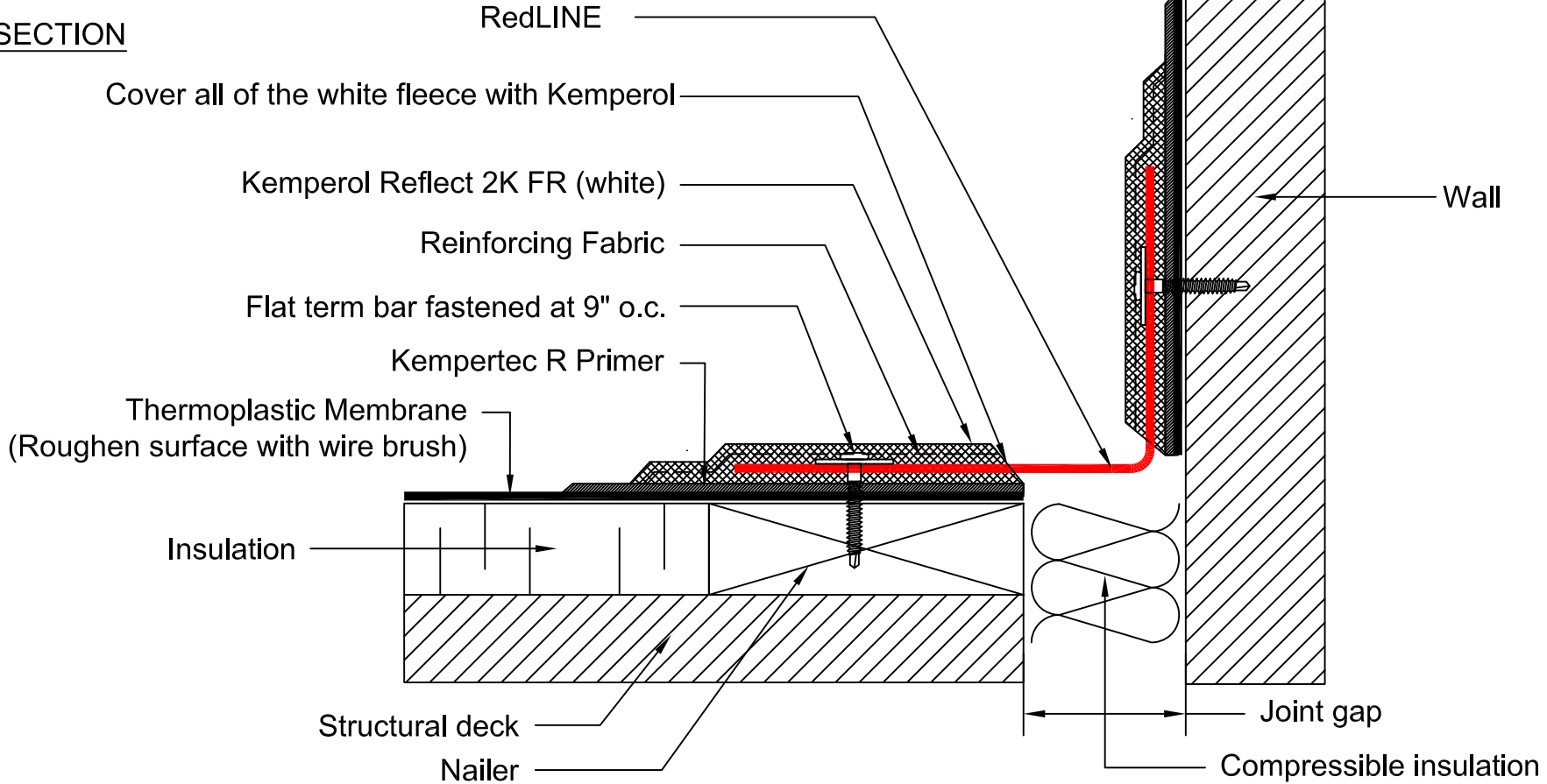


Notes

1. Material is RedLINE.
2. This detail illustrates a typical application.
Refer to project specific details for more information.

SECTION



DETAIL NAME:

**RedLINE® Waterproof Expansion Joint
installed into Thermoplastic Membrane
(Deck-to-Wall)**

APPROVALS AND SIGN OFFS

| DESCRIPTION | DATE | SIGNED BY: |
|-------------|----------|------------|
| REVISION #1 | 01/01/17 | SL |
| REVISION #2 | | |
| REVISION #3 | | |
| REVISION #4 | | |
| REVISION #5 | | |

As a supplier of finished products only, SITURA INC., does not assume responsibility for errors in design, engineering or dimensions. The architect or owner's representative must verify all dimensions and suitability of details. RedLINE®, FlamLINE®, AqualINE® are registered trade marks of SITURA INC. © Copyright SITURA 2017.

DETAIL NUMBER:

RL-TPL-04

SCALE:

NTS

CHECKED BY:

KMZ

DATE:

06/01/07

SHEET:

1 of 1