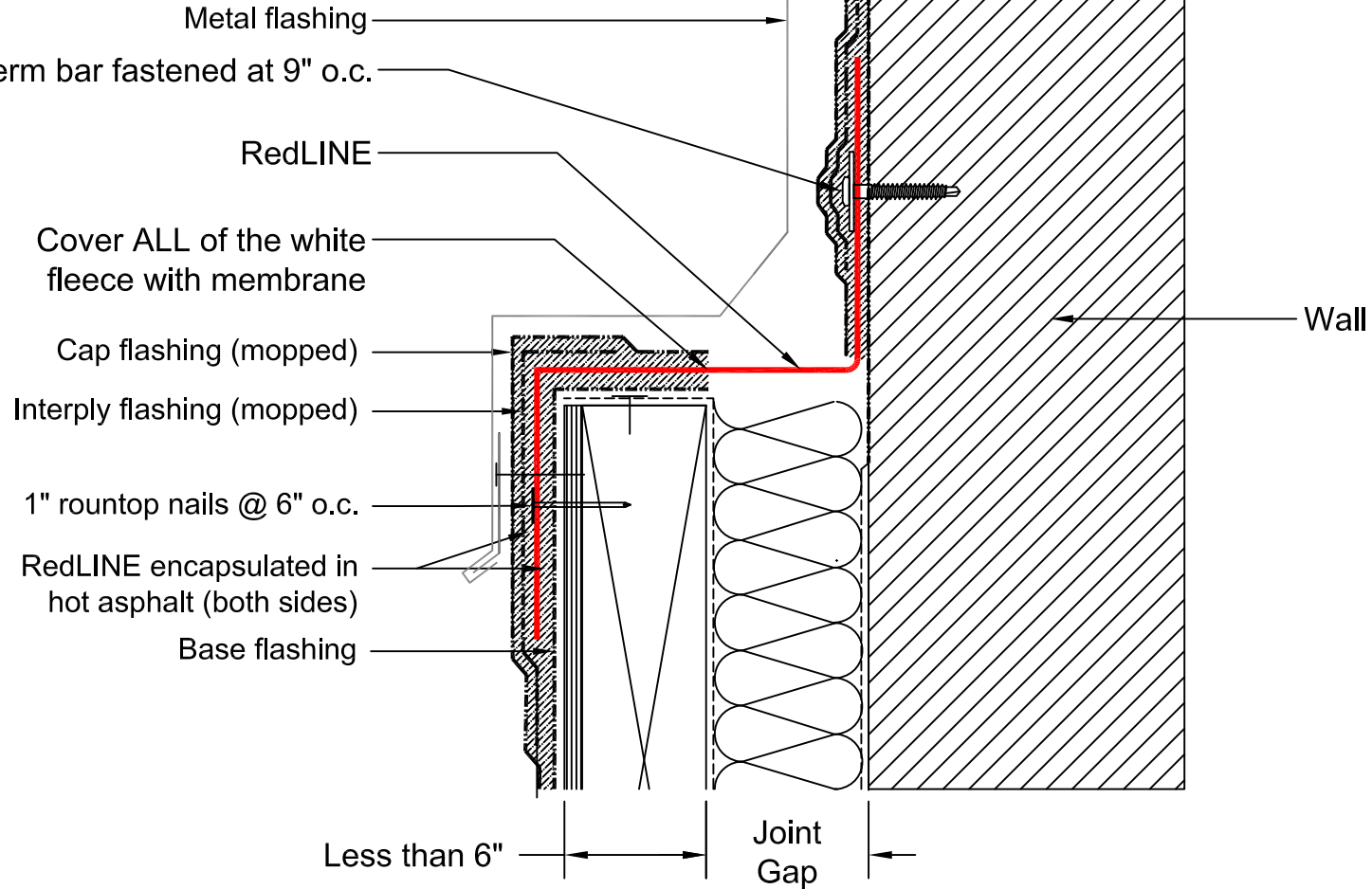


Notes

1. Material is RedLINE.
2. This detail illustrates a typical application.
Refer to project specific details for more information.

SECTION

Term bar fastened at 9" o.c.




SITURA INC.
Waterproof Expansion Joints

As a supplier of finished products only, SITURA INC., does not assume responsibility for errors in design, engineering or dimensions. The architect or owner's representative must verify all dimensions and suitability of details. RedLINE®, FlamLINE®, AqualINE® are registered trade marks of SITURA INC. © Copyright SITURA 2017.

DETAIL NAME: RedLINE® Waterproof Expansion Joint installed into Mopped Modified Bitumen Membrane (Curb-to-Wall - Narrow Curb)			
DETAIL NUMBER: RL-MMB-04			
SCALE: NTS	CHECKED BY: SL	DATE: 01/01/17	SHEET: 1 of 1

APPROVALS AND SIGN OFFS		
DESCRIPTION	DATE	SIGNED BY:
REVISION #1		
REVISION #2		
REVISION #3		
REVISION #4		
REVISION #5		