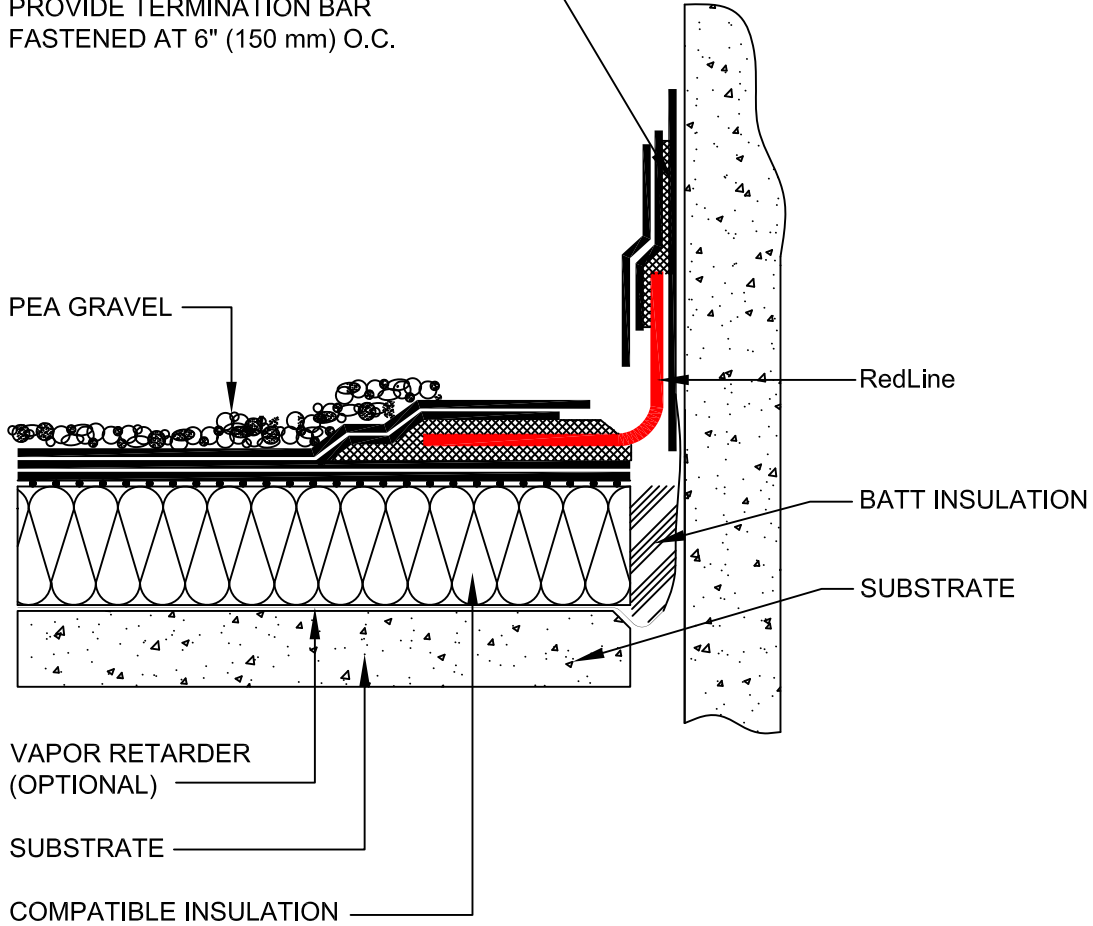


2 PLY FLASHING OR MOPPED
 MODIFIED BITUMEN MEMBRANE
 FLASHING. IF USING COLD ADHESIVE
 PROVIDE TERMINATION BAR
 FASTENED AT 6" (150 mm) O.C.



NOTES:

- 1.) FOR TECHNICAL SUPPORT PLEASE CALL SITURA INC. AT 1-888-4-SITURA (474-8872)
- 2.)
- 3.)

AS A SUPPLIER OF FINISHED PRODUCTS ONLY, SITURA INC., DOES NOT ASSUME RESPONSIBILITY FOR ERRORS IN DESIGN, ENGINEERING OR DIMENSIONS. THE ARCHITECT OR OWNER'S REPRESENTATIVE MUST VERIFY ALL DIMENSIONS AND SUITABILITY OF DETAILS. RedLINE® IS A REGISTERED TRADE MARK OF SITURA INC. © COPYRIGHT 1997-2007 SITURA INC.

PROJECT NAME:

**CONVENTIONAL BUR DETAIL
 WITH RedLINE® WATERPROOF EXPANSION JOINT.**

APPROVALS & SIGN OFFS

<u>DESCRIPTION:</u>	<u>DATE:</u>	<u>SIGNED BY:</u>
REVISION #1		
REVISION #2		
FABRICATION APPROVAL		

DETAIL NUMBER:

BUR/TD-02

SCALE:

N.T.S.

CHECKED BY:

KMZ

DATE:

06/01/07

SHEET:

1 OF 1