

2 PLY FELT ENVELOPE  
TO PREVENT PITCH  
FLOW JOINT GAP

MECHANICAL PROTECTION  
2 POLYESTER PLYS

BASE SHEET SET IN  
CEMENT PRIOR TO  
MOPPING PITCH.

PEA GRAVEL

VAPOR RETARDER  
(OPTIONAL)

COMPATIBLE INSULATION

SUBSTRATE

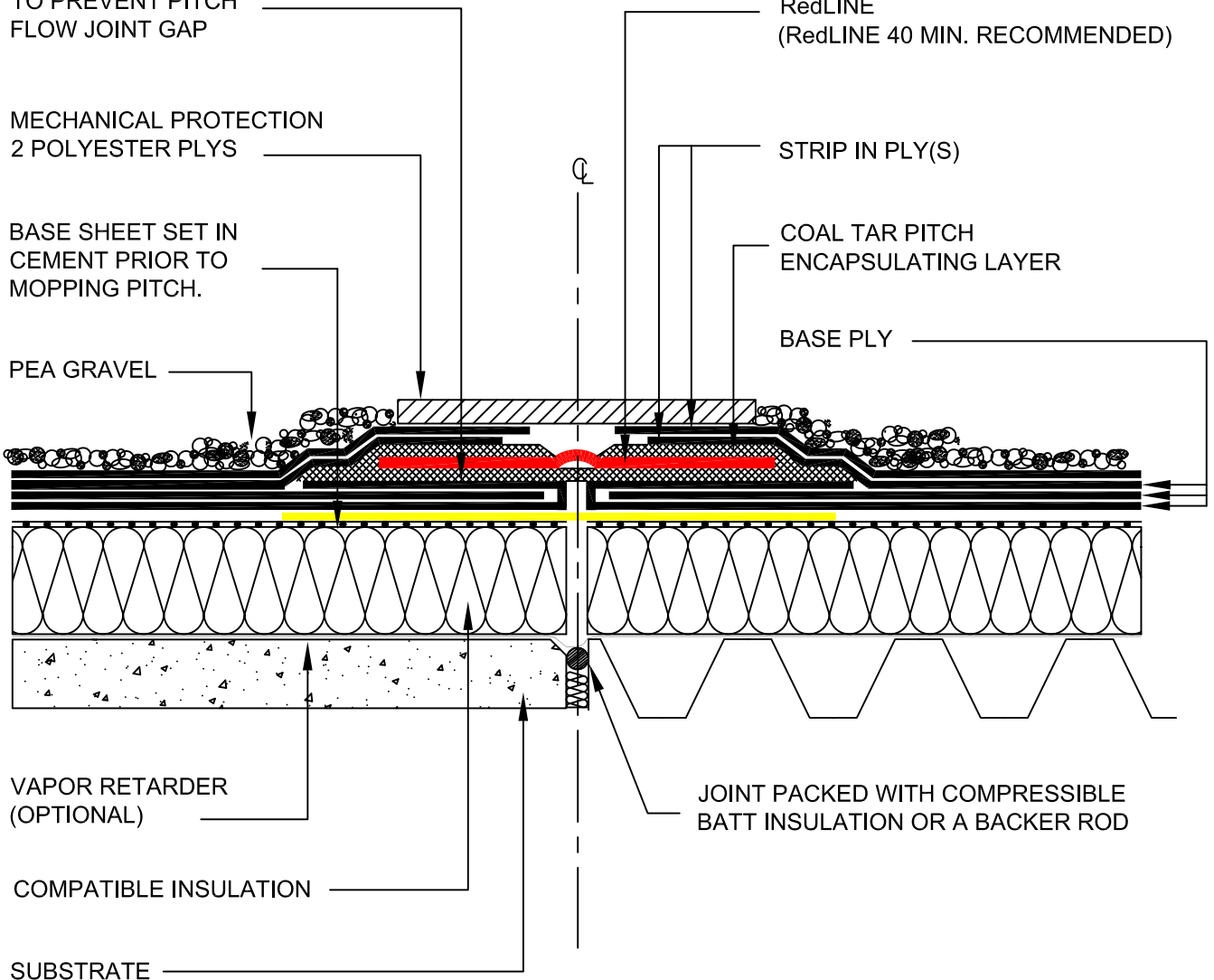
RedLINE  
(RedLINE 40 MIN. RECOMMENDED)

STRIP IN PLY(S)

COAL TAR PITCH  
ENCAPSULATING LAYER

BASE PLY

JOINT PACKED WITH COMPRESSIBLE  
BATT INSULATION OR A BACKER ROD



**NOTES:**

- 1.) FOR TECHNICAL SUPPORT PLEASE CALL SITURA INC. AT 1-888-4-SITURA (474-8872)
- 2.)
- 3.)

AS A SUPPLIER OF FINISHED PRODUCTS ONLY, SITURA INC., DOES NOT ASSUME RESPONSIBILITY FOR ERRORS IN DESIGN, ENGINEERING OR DIMENSIONS. THE ARCHITECT OR OWNER'S REPRESENTATIVE MUST VERIFY ALL DIMENSIONS AND SUITABILITY OF DETAILS. RedLINE® IS A REGISTERED TRADE MARK OF SITURA INC. © COPYRIGHT 1997-2007 SITURA INC.

PROJECT NAME:

**COLD TAR PITCH DETAIL**

WITH RedLINE® WATERPROOF EXPANSION JOINT.

**APPROVALS & SIGN OFFS**

DESCRIPTION:	DATE:	SIGNED BY:
REVISION #1		
REVISION #2		
FABRICATION APPROVAL		

DETAIL NUMBER:

**CTP/TD-01**

SCALE:

**N.T.S.**

DATE:

**06/01/07**

CHECKED BY:

**KMZ**

SHEET:

**1 OF 1**