

Notes

1. Material is RedLINE.
2. This detail illustrates a typical application.
Refer to project specific details for more information.

SECTION

Cover ALL of the white fleece with membrane

Cap sheet

Interply sheet

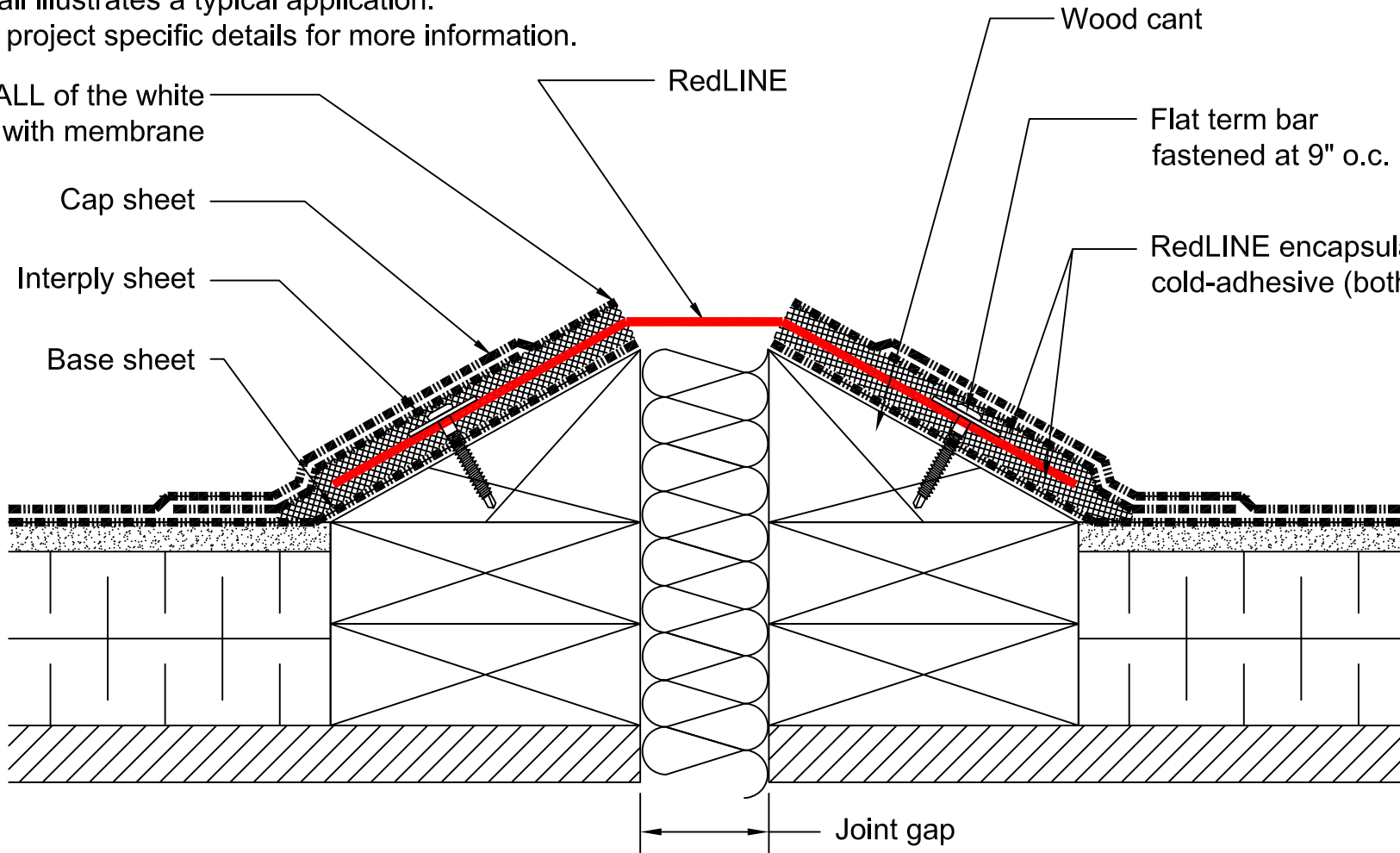
Base sheet

RedLINE

Wood cant

Flat term bar fastened at 9" o.c.

RedLINE encapsulated in cold-adhesive (both sides)



DETAIL NAME:

**RedLINE® Waterproof Expansion Joint
installed into Cold-Applied Modified Bitumen
Membrane (cant-to-cant)**

APPROVALS AND SIGN OFFS

DESCRIPTION	DATE	SIGNED BY:
REVISION #1		
REVISION #2		
REVISION #3		
REVISION #4		
REVISION #5		

As a supplier of finished products only, SITURA INC., does not assume responsibility for errors in design, engineering or dimensions. The architect or owner's representative must verify all dimensions and suitability of details. RedLINE®, FlamLINE®, AqualINE® are registered trade marks of SITURA INC. © Copyright SITURA 2018.

DETAIL NUMBER:

RL-CAM-03

SCALE:

NTS

CHECKED BY:

SL

DATE:

04/26/18

SHEET:

1 of 1