

FlamLINE® INSTALLATION GUIDE

FOR USE WITH:
TORCHED MODIFIED BITUMEN MEMBRANES

INTRODUCTION

This installation technique is used predominantly in torched roofing and waterproofing systems that are modified bitumen based. The process of installing the FlamLINE waterproofing joint system is simple, note that the FlamLINE material contains no asphalt. The complete expansion joint material is shipped in a roll with all detailing prefabricated. Installation takes place as roofing/waterproofing progresses. The installation procedure is described as follows:

STEP 1: SUBSTRATE PREPARATION

Identify the start installation location from the plan accompanying the roll of FlamLINE water-proof expansion joint material. Roll out the FlamLINE and allow it to relax, until flat, prior to application. Make sure that the building expansion joint is clean and free of debris and has been packed with compressible batt insulation or a backer rod installed.

STEP 2: ALIGNMENT

Align the center line of the expansion joint gap or gap with the centre line of the FlamLINE waterproof expansion joint material, and verify the FlamLINE conformance to site details prior to the torching application.

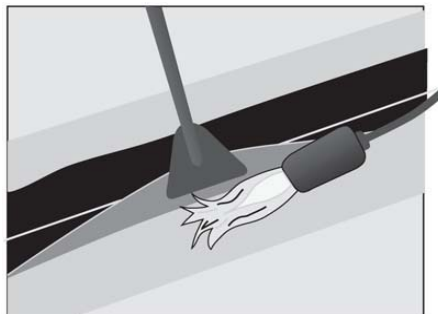
STEP 3: ADHESION & ENCAPSULATION

There two methods of torching the FlamLINE:

Method A. Apply sufficient heat to the top of the base sheet in order to liquify it and immediately embed the FlamLINE into it. Press the FlamLINE into the liquified asphalt from the center outward, with a blunt putty knife or trowel. Watch for bleed out to ensure proper adhesion. Once the membrane has cooled, run the tip of a trowel along the edge to check for any poorly adhered spots. Reapply heat and adhered as necessary.

Fig. 1: Torching Method "A"

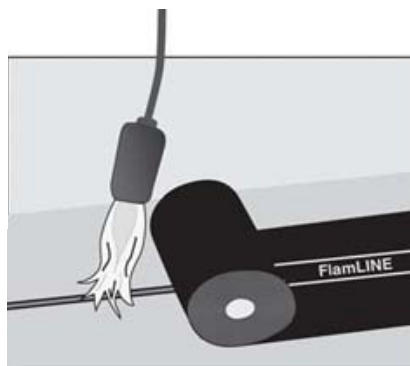
Best used when installing FlamLINE in sections where there are a lot of fabricated details such as corners.



Method B. Apply heat to the top of the base sheet in order to liquify it and immediately unroll the FlamLINE into it. Press the FlamLINE into the liquified asphalt from the center outward, with a blunt putty knife or trowel. Watch for bleed out to ensure proper adhesion. Check for any poorly adhered spots; reapply heat and adhered as necessary.

Fig. 2: Torching Method "B"

Best used for straight runs of FlamLINE with little detail work.



FlamLINE® INSTALLATION GUIDE

**FOR USE WITH:
TORCHED MODIFIED BITUMEN MEMBRANES**

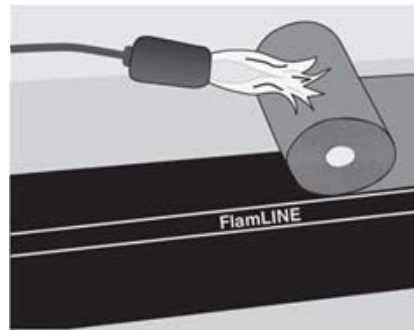
STEP 4: BASE FLASHING & PREPARATION

Cut two strips of modified bitumen base sheet with the width of each strip being 6" to 12" [150 mm to 300 mm] wide. Use a chalk line or marker to mark the middle of the yellow selvage and torch the base flashing to the FlamLINE half way onto the selvage edge, with the other half onto the base sheet beyond. Use a trowel to butter the edge and ensure proper adhesion.

STEP 5: CAP FLASHING

Flash in the FlamLINE with a torch-applied cap flashing ply, completely encapsulating the yellow FlamLINE selvage edge. Ensure there is sufficient bleed out along the cap sheet.

Fig. 3: Flashing in the FlamLINE



STEP 6: ADDITIONAL PROTECTION (OPTIONAL)

If an additional protective layer is required, such as for extended warranties, spot torch a strip of modified bitumen material to one side of the FlamLINE joint covering the exposed part of the FlamLINE material. This allows for free movement of the protection layer. Additionally, pavers or metal flashing can also be used to protect the joint from damage.

TAKE NOTE...

POINTS TO NOTE WHEN INSTALLING FlamLINE WITH TORCHED MODIFIED BITUMEN MEMBRANES

1. Ensure that the bottom surface of the FlamLINE material is completely bonded to the base ply, with bleed out evident at the material edge. **DO NOT LIFT UP THE FLAMLINe**. Use a trowel test the edge for any unadhered portions.
2. Ensure that the top surface of the FlamLINE material is completely bonded to the base and cap plies, with bleed out evident at the material selvage edge.
3. Do not apply open flame directly to the FlamLINE gland material for a prolonged period. Heat should be concentrated to the modified bitumen sheet.
4. Follow all manufacturer's recommendations as they pertain to the installation of torched modified bitumen membranes.

FlamLINE® INSTALLATION GUIDE
FOR USE WITH:
TORCHED MODIFIED BITUMEN MEMBRANES



FlamLINE being dry fitted to ensure correct fit.



FlamLINE being adhered by rolling into liquified base sheet.

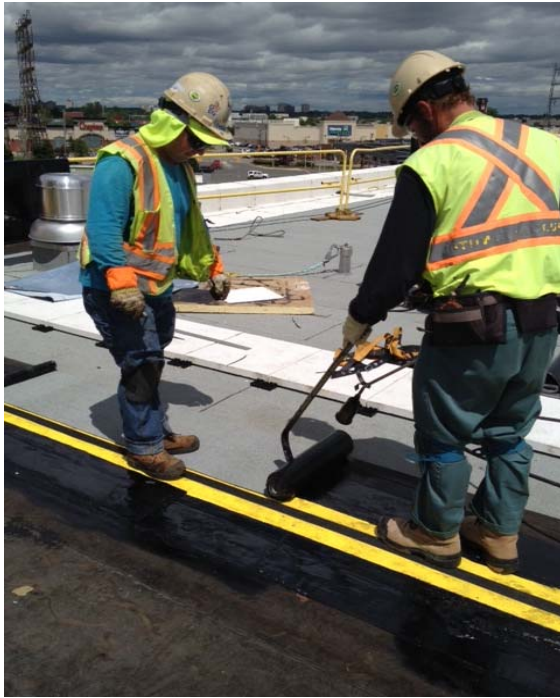


Pressure is applied to the FlamLINE to ensure proper adhesion and bleed out.



Base flashing is being torched half way onto the yellow selvage edge.

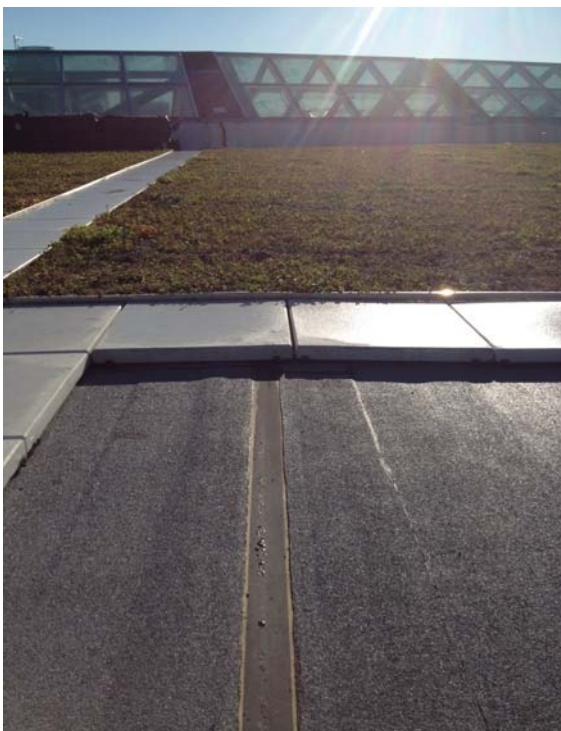
FlamLINE® INSTALLATION GUIDE
FOR USE WITH:
TORCHED MODIFIED BITUMEN MEMBRANES



FlamLINE being flashed in with torch-applied cap sheet



The completed FlamLINE installation



The completed FlamLINE installation