

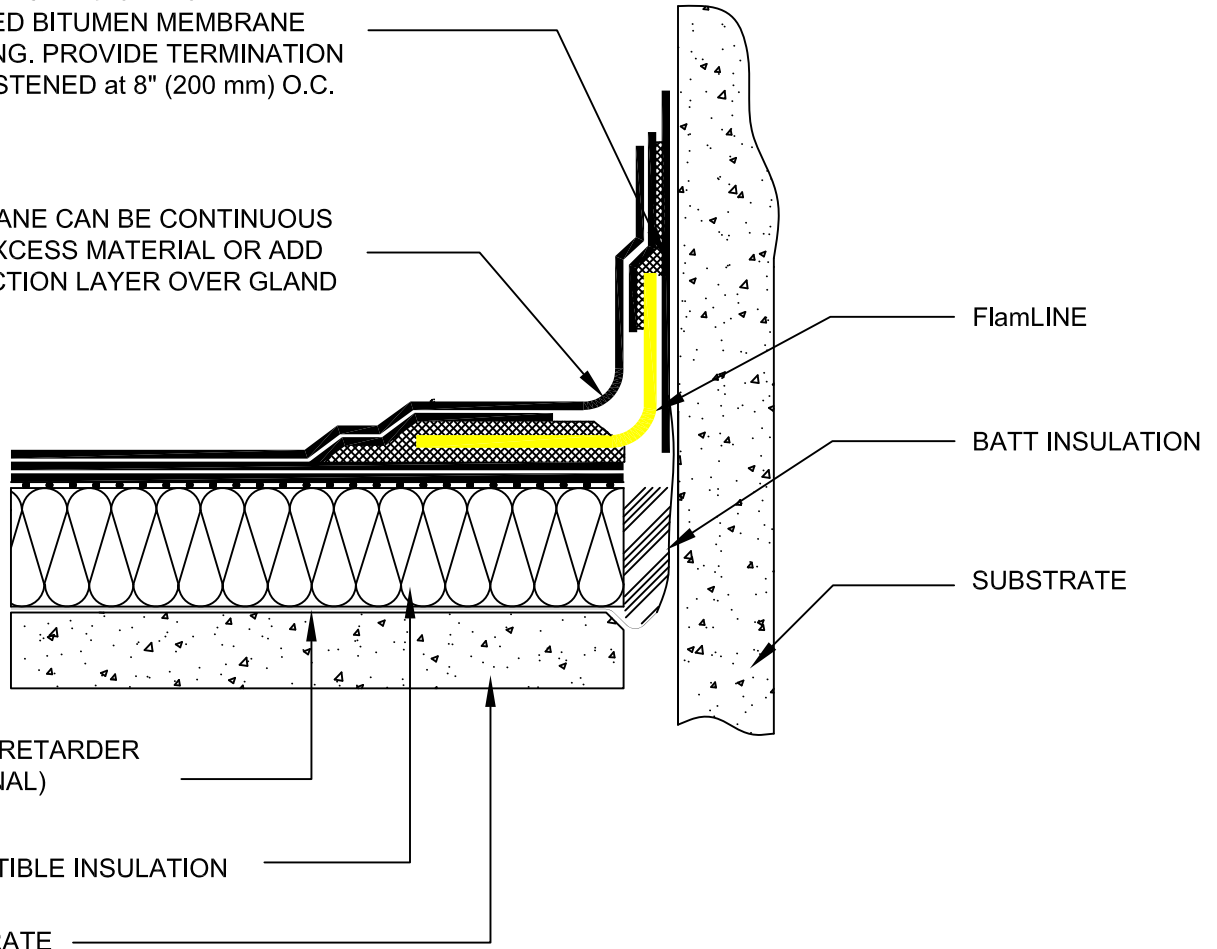
2 PLY FLASHING OR MOPPED  
MODIFIED BITUMEN MEMBRANE  
FLASHING. PROVIDE TERMINATION  
BAR FASTENED at 8" (200 mm) O.C.

MEMBRANE CAN BE CONTINUOUS  
WITH EXCESS MATERIAL OR ADD  
PROTECTION LAYER OVER GLAND

VAPOR RETARDER  
(OPTIONAL)

COMPATIBLE INSULATION

SUBSTRATE



**NOTES:**

- 1.) FOR TECHNICAL SUPPORT PLEASE CALL SITURA INC. AT 1-888-4-SITURA (474-8872)
- 2.)
- 3.)

AS A SUPPLIER OF FINISHED PRODUCTS ONLY, SITURA INC., DOES NOT ASSUME RESPONSIBILITY FOR ERRORS IN DESIGN, ENGINEERING OR DIMENSIONS. THE ARCHITECT OR OWNER'S REPRESENTATIVE MUST VERIFY ALL DIMENSIONS AND SUITABILITY OF DETAILS. RedLINE® IS A REGISTERED TRADE MARK OF SITURA INC. © COPYRIGHT 1997-2007 SITURA INC.

PROJECT NAME:

**SBS/APP MODIFIED BITUMEN  
TORCH DETAIL  
WITH FlamLINE® WATERPROOF EXPANSION JOINT.**

**APPROVALS & SIGN OFFS**

DESCRIPTION:      DATE:      SIGNED BY:

REVISION #1

REVISION #2

FABRICATION  
APPROVAL

DETAIL NUMBER:

**MBT/TD-02**

SCALE:

**N.T.S.**

DATE:

**06/01/07**

CHECKED BY:

**KMZ**

SHEET:

**1 OF 1**